



# GAT MONTHLY MEMBERSHIP PROGRESS REPORT

Results as of: 12/31/2021

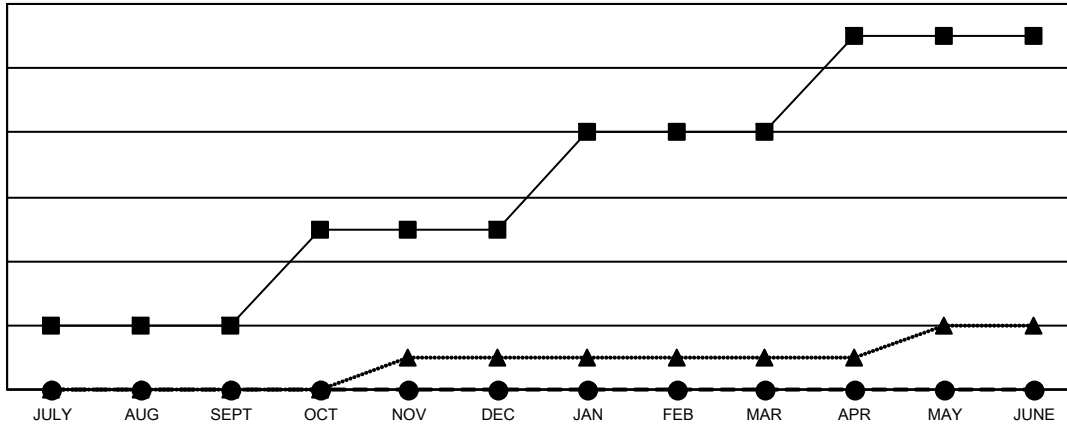
Multiple District 31

LOCATION: NORTH CAROLINA

| Clubs                 |               |           |               |
|-----------------------|---------------|-----------|---------------|
| RESULTS FOR 2021-2022 |               |           |               |
| QUARTER               | NEW CLUB GOAL | NEW CLUBS | DROPPED CLUBS |
| JULY/AUG/SEPT         | 2             | 0         | 4             |
| OCT/NOV/DEC           | 3             | 0         | 1             |
| JAN/FEB/MAR           | 3             | 0         | 0             |
| APR/MAY/JUNE          | 3             | 0         | 0             |

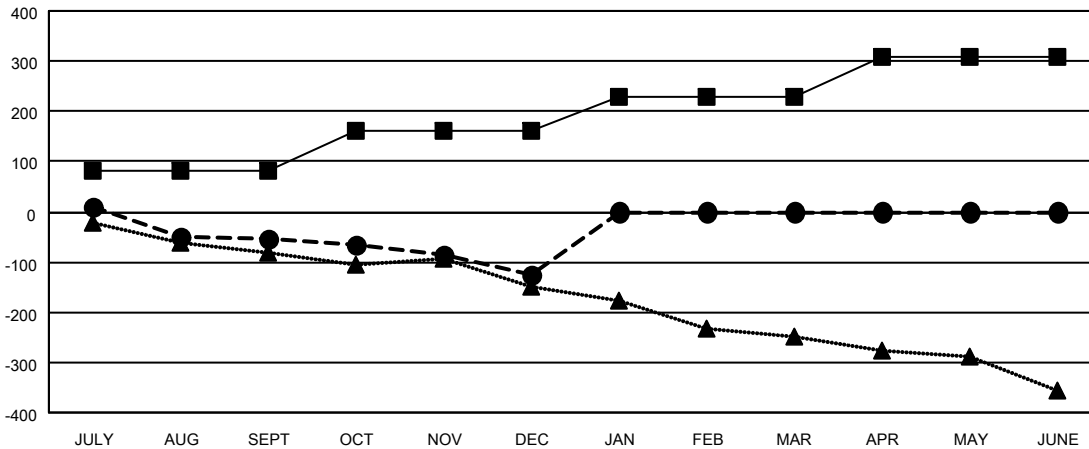
| Members               |                        |                      |  |
|-----------------------|------------------------|----------------------|--|
| RESULTS FOR 2021-2022 |                        |                      |  |
| QUARTER               | MEMBER GROWTH NET GOAL | MEMBER GROWTH ACTUAL | DROPPED MEMBERS ACTUAL (including transfers) |
| JULY/AUG/SEPT         | 82                     | 130                  | 171  |
| OCT/NOV/DEC           | 80                     | 143                  | 170  |
| JAN/FEB/MAR           | 67                     | 0                    | 0  |
| APR/MAY/JUNE          | 80                     | 0                    | 0  |

GOALS AND ACTUAL NEW CLUBS CUMULATIVE



- CURRENT YEAR GOALS FOR NEW CLUBS
- CURRENT YEAR ACTUAL NEW CLUBS
- ▲- LAST YEAR ACTUAL NEW CLUBS

GOALS AND ACTUAL MEMBERS CUMULATIVE



- MEMBER GROWTH NET GOAL
- MEMBER GROWTH ACTUAL
- ▲- LAST YEAR MEMBERSHIP ACTUAL

|                         |   |  |
|-------------------------|---|--|
| <b>DROPPED CLUBS: 5</b> | 93 CLUBS OF 263 ADDED 1 OR MORE NEW MEMBERS               | <b>GENDER DISTRIBUTION</b>             |
| <b>DROPPED MEMBERS</b>  | <a href="#">CLICK HERE FOR CUMULATIVE MEMBERSHIP DATA</a> | MALE 3,285 (67.32%)                    |
| DECEASED 59             |   | FEMALE 1,595 (32.68%)                  |
| CLUB CANCELLED 75       |   | NON BINARY 0 (0.00%)                   |
| OTHER 207               |   | PREFER NOT TO ANSWER 0 (0.00%)         |
| <b>TOTAL 341</b>        |   | <b>TOTAL FAMILY UNIT MEMBERS 1,113</b> |
|                         |   | FAMILY MEMBERS PAYING HALF DUES 571    |